

STANDARD FEATURES

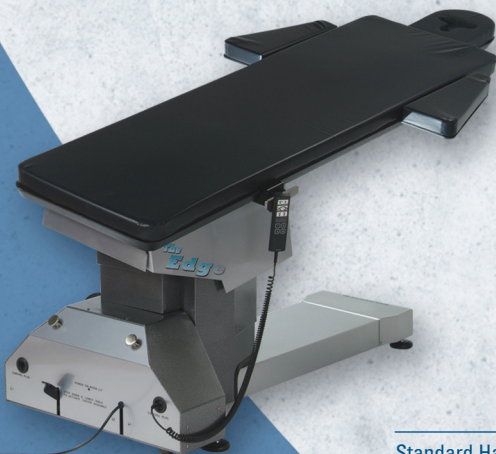
- 3 Motion Table
- 600 lb. Patient Rating
- 25" Low Height

PAIN MANAGEMENT

Image Guided Procedural Table



Unique central locking caster system allows table to set on four 3" diameter swivel feet for unsurpassed stability.



Standard Hand Set





PAIN MANAGEMENT Image Guided Procedural Table

STANDARD FEATURES

- 22" wide x 82" long carbon fiber top with a head silhouette and face cut out
- Two accessory rail clamps that clamp directly to carbon fiber top
- 22" x 55" radiolucent area (22" x 65" with Power Top Travel)
- 2" thick mattress, face cushion with face cutout and head cushion
- Double slide under radiolucent arm boards with 2" thick pads
- Two 2" wide restraint straps
- Battery backup
- Intuitive controls with all table functions plus central locking on hand set
- Low profile base extension for C-arm clearance
- Two control ports front and rear
- Easy to clean mirror-like platinum finish

SPECIFICATIONS	Standard 3-way	Optional 5-way
Height range	25" - 37" 63.5 - 94cm	29.5" - 41.5" 74.9 - 105.4cm
Lateral tilt	± 20°	± 20°
Trendelenberg	15°	15°
Reverse Trendelenberg	15°	15°
Patient weight limit	600 lbs 272 kg	600 lbs 272 kg
Power requirements	115 vac, 60 hertz, 10 amps	
Programmable memory hand control:	Yes	Yes
Lateral top travel (Power in / out uses foot control)	No	6" 150 mm
Longitudinal top travel (Power in / out uses foot control)	No	10" 250 mm
Foot control	Optional	2 Position